



15 – 17 April 2015
Slovenj Gradec
Slovenia

Biopolymer Materials and Engineering

Information Pack for Participants



REPUBLIC OF SLOVENIA
MINISTRY OF EDUCATION,
SCIENCE AND SPORT



The conference is organized within operation Creative Core VŠTP. The operation is partially co-financed by European Union, European Regional Development Fund. The operation is executed within the framework of Operative Programme for Strengthening Regional Development Potentials for Period 2007-2013, 1st development priority: Competitiveness of the companies and research excellence, priority aim 1.1.: Improvement of the competitive capabilities of companies and research excellence.

Conference Biopolymer Materials and Engineering is going to be held in Slovenia at the Polymer Technology College in Slovenj Gradec, from 15 to 17 April 2015.

BASIC INFORMATION ABOUT SLOVENIA

Slovenia is the only country in Europe that combines the Alps, the Mediterranean, the Pannonian Plain and the Karst. The changing landscape is constantly surprising, time and again. You can have one eye on the sea, then look in the other direction and be surrounded by high mountains. Heading up into the forests, you can see the green plains below you. From upland meadows your view stretches into river gorges. This proximity of opposites and contrasts is a hallmark of the country.¹

Population: 2,055,000

Position: Slovenia is in central Europe.

Area: 20,273 km²

Government: Slovenia is a democratic republic founded on the principle of the separation of powers of the legislative, executive and judicial branches of authority.

Capital city: Ljubljana, population: 280,000

President of the Republic: Borut Pahor

Prime Minister: Miro Cerar

President of the National Assembly: Milan Brglez

Membership of international organisations: Slovenia has been a member of the European Union since 1 May 2004 and a member of NATO since 7 April 2004. It is also a member of many other international organisations.

Other major centres: Maribor, Kranj, Celje, Koper, Novo Mesto, Velenje, Murska Sobota.

Official language: Slovene; also Hungarian and Italian in their respective ethnically mixed areas.

Currency: euro (EUR), since 1 January 2007.

Climate: Alpine, Pannonian, Mediterranean

Time: Central European Time (UTC + 1), Central European Summer Time (UTC + 2)

Average temperatures: July 21°C, January 0°C

Electricity supply: 230 V

Units of measurement: metric – metres, kilometres, grams, kilograms. Temperatures are expressed in degrees Celsius.

Length of borders: with Austria 330 km, with Italy 280 km, with Hungary 102 km and with Croatia 670 km; total 1,382 km

Length of coastline: 46.6 km

Highest peak: Triglav, 2,864 m²

¹ http://www.slovenia.info/?o_sloveniji=0

² http://www.slovenia.info/en/Basic-information-on-Slovenia.htm?osnovni_podatki=0&lng=2

ARRIVING TO SLOVENJ GRADEC



© <http://www.koroska.si/en/rdo-koroska/location-and-transport-information>

BY AIR

The nearest international airports are:

- Klagenfurt Airport in Klagenfurt, Austria (84 km to Slovenj Gradec)
- Ljubljana Airport at Brnik, Slovenia (109 km to Slovenj Gradec)
- Airport in Graz, Austria (129 km to Slovenj Gradec)
- Zagreb Airport in Zagreb, Croatia (173 km to Slovenj Gradec)
- Salzburg Airport in Salzburg, Austria (302 km to Slovenj Gradec)
- Venice Airport in Venice, Italy (352 km to Slovenj Gradec)
- Treviso Airport in Treviso, Italy (352 km to Slovenj Gradec)

BY CAR

Slovenia and Slovenj Gradec can be reached via major motorways from Austria, Italy, Hungary and Croatia.

Travelling from Slovenia, it takes 30 minutes to reach Koroška from the A1 - Arja Vas exit by car. Travelling from Austria, it takes 20 minutes from the A2 - Griffen or St. Andrä exits.³

For detailed travel directions please consult your route planner (or use an online route planner: [ViaMichelin](#) or [Google Maps](#)).

Please also note that for Slovenian motorways a vignette is required. For more information on vignettes please visit [AMZS](#).

BY TRAIN

The nearest train stations to reach Slovenj Gradec are Velenje, Dravograd and Ravne na Koroškem. To plan your trip, please visit the [Slovenian Railway website](#). For international visit please visit [DB Bahn](#).

BY BUS

Slovenj Gradec is well connected to other parts of Slovenia by bus lines. Below are listed links to bus stations Ljubljana and Maribor, and two major bus companies offering transportation to Koroška region. Participants arriving there can check the connections and schedules for Slovenj Gradec.

- [Bus station Ljubljana](#)
- [Bus station Maribor](#)
- [Izletnik Celje](#)
- [Koratur](#)

³ <http://www.koroska.si/en/rdo-koroska/location-and-transport-information>

ABOUT SLOVENJ GRADEC

Slovenj Gradec lies in Koroška region, in the Mislinja valley, and is surrounded by scenic mountains. The town has a rich history and is famous for numerous international exhibitions and events. It owns the honorary title of Peace Messenger City.

It was founded by the Counts of Andechs and then experienced turbulent centuries passing from one owner to another while its crafts and commerce flourished. With the granting of city rights, Slovenj Gradec acquired walls, fair privileges, a court, and its own mint. Commerce and crafts were joined by the arts.⁴

The name of the town was first mentioned in 1091. It developed between Mount Uršlja gora and the western Pohorje mountain range at the confluence of the Mislinja and Suhodolnica rivers. Its history is rich and linked with that of Stari trg where Roman settlement of Colatio was built.⁵

It is the administrative, economical and cultural centre of the Mislinja Valley and also the oldest town in the Koroška region, for it was granted its town charter as early as 1267. Its favorable position was provided by the shelter between Mt Uršlja gora and the neighboring Pohorje, where tourists nowadays can choose from many well-maintained hiking and cycling trails. The town is known for its artists and numerous cultural and social events.”⁶

Today's Slovenj Gradec continues the tradition of the past; numerous exhibitions and events have brought international fame, and in 1989, the town was given the honorary title of Peace Messenger City.

SLOVENJ GRADEC – OLD CITY CORE

The old city core of Slovenj Gradec has preserved its original outline, which today makes it an important monument of city planning. Of special interest are the former City Hall housing the Koroška Art Gallery and the Koroška Regional Museum, the Church of Sv. Elizabeta from 1251, the birth house of composer Hugo Wolf, Rotenturn Manor, the Soklič Museum, and the Church of Sv. Duh. Where it has retained its original plan, the old town core is a significant urban monument. In the Middle Ages, the old city was walled and traces of the wall can still be seen along Meškova, Ozka, and Cankarjeva streets. The renovated Rotenturn Mansion sprang from the former Schulthausezinger Tower. The town lies at the junction of several roads between Mount Uršlja gora and the Pohorje mountain range that offer travellers to the area unspoiled nature and numerous mysteries worth discovering.⁷

⁴ <http://www.slovenjgradec.si/description-of-the-city.html>

⁵ <http://www.slovenjgradec.si/description-of-the-city.html>

⁶ <http://www.koroska.si/en/rdo-koroska/municipalities/375-Slovenj-Gradec>

⁷ <http://www.slovenjgradec.si/description-of-the-city.html>

TOURIST SIGHTS

SLOVENJ GRADEC MEDIEVAL TOWN CENTRE



© <http://www.koroska.si/en/cultural-heritage/arheoloska-dediscina/547-SLOVENJ-GRADEC-MEDIEVAL-TOWN-CENTRE>

Slovenj Gradec, with its medieval town centre, is one of Slovenia's oldest towns. It was already mentioned as a town in 1267, and had been mentioned as a market town a few years earlier. Slovenj Gradec is thus an important infrastructural monument. Even though the buildings have more of a 19th century look, the town centre has still preserved its medieval design and is now the epicentre for cultural and social life.

From the 14th century onwards, during the rule of the House of Habsburg, the town was surrounded by a wall, with its traces still seen behind the Mežek, Ozka, and Cankar streets, whereas a part of the old wall is protected as an archaeological park. After the end of the Turkish and the Hungarian raids, and when the walled town could not fit the whole population anymore, building began outside the town walls, and the moat was purposefully being filled up.

The most important chapter of Slovenj Gradec's medieval past is connected with Henry IV of Andechs, the Margrave of Istria and the Kamnik Lord, as well as with his brother and successor, Berthold V of Andechs, the Patriarch of Aquileia. In 1251, Berthold V dedicated a church to his niece, Elizabeth of Hungary, and so St. Elizabeth's Church is the oldest building in Slovenj Gradec. Two Roman windows and a Roman nave are preserved from the original building, with Gothic, Renaissance and Baroque elements being added to the church throughout the years. The furnishings date mostly from the Baroque period.

Next to St. Elizabeth's Church stands the Church of the Holy Spirit, built in 1428 as a hospital chapel for the town almshouse. The church belongs to the period of Gothic architecture and has got Baroque furnishings, although the murals were done in the middle of the 15th century by Andreas of Otting, a Bavarian fresco painter.

Beside the coins minted by the Andechs' coin mint, as well as the rare structural elements found throughout the town, Berthold also left behind an exceptional architectural monument of the late Romanesque and the early Gothic period: a complex of a former castle chapel and St. Pancras Church above the village of Stari Trg. Even as early as the end of the 11th century, a fortified castle stood here, presumably the earliest castle in the Štajerska region, after the Rajhenburg Castle (also Reichenburg Castle) in Brestanica.

On the edge of the old town centre stands a renovated Rotenturn Manor House, originating in the former Schulthauzinger defence tower, first mentioned in the 15th century. The manor house with its arcaded halls and a Baroque gate has seen many reconstructions, and is still closely linked to the town life as a place of management of the Municipality of Slovenj Gradec and the town mayor. The Rotenturn Manor House is also the main entertainment venue during summer, hosting numerous events and concerts.

If you take a stroll through Slovenj Gradec's town centre you can not only visit the aforementioned churches and manor house but also The Gallery of Fine Arts, the Koroška Regional Museum, and the Hugo Wolf Memorial Museum. You can enjoy some refreshments in one of the lovely cafes, and with so much to offer, Slovenj Gradec will surely leave a unique mark. If you're in Slovenj Gradec for a longer period of time, then you should certainly visit St. Pancras Church above the village of Stari Trg, where you can have a look at the Counts of Andechs permanent exhibition in the old arsenal nearby. For the more active ones, we suggest climbing up Rahtel Hill for a great scenic view over Slovenj Gradec and its surrounding areas.⁸

Surely one of more interesting churches is also St. George's Church in Legen, because of its superbly presented interior archaeological remains. The remains are of older sacral structures and graves found by archaeologists in 1993 when the deteriorated church floor was being replaced. The heated glass walking surface now enables visitors to see the exciting remains of the past, telling a story of the same place but at a different time.⁹



© <http://www.koroska.si/en/cultural-heritage/412/466-ST-GEORGE-S-CHURCH>

⁸ <http://www.koroska.si/en/cultural-heritage/arheoloska-dediscina/547-SLOVENJ-GRADEC-MEDIEVAL-TOWN-CENTRE>

⁹ <http://www.koroska.si/en/cultural-heritage/412/466-ST-GEORGE-S-CHURCH>

ACCOMMODATION

In Slovenj Gradec and in the near area there are several hotels available for you. The closest and most convenient for the conference are:

Youth Hostel Slovenj Gradec,
T: +386 2 88 46 290,
E: dasa.pungersek@slovenjgradec.si

The Yout Hostel Slovenj Gradec lies across the street of VŠTP and is a part of the Youth Centre Slovenj Gradec.



©<http://www.koroska.si/si/>

Hotel Vabo in Slovenj Gradec,
T: +386 2 88 39 850,
E: rezervacije@kope.si

Hotel Vabo is located in the town centre, approximately 10 minutes of walking distance from VŠTP. Directions for participants coming from the hotel by foot or by car are available in the following chapter.



©<http://www.vabo.si>

Gostišče Aerodrom in Slovenj Gradec,
T: +386 2 88 50 500,
E: aerodrom@kope.si

Gostišče Aerodromi s located about 3 km outside Slovenj Gradec in Mislinjska Dobrava. Directions for participants driving to VŠTP are available in the next chapter.



©<http://www.koroska.si/si/>

DIRECTIONS

COMING TO SLOVENJ GRADEC FROM THE DIRECTION OF DRAVOGRAD

When you get to Slovenj Gradec from Dravograd, turn right at the first traffic light (vis-a-vis restaurant MURKO). Drive ahead to the second crossroad where you will already see the Polymer Technology College on the left. Take a turn left. Drive straight ahead to the first crossroad and take two turns right to get to the parking space in front of VŠTP.

COMING TO SLOVENJ GRADEC FROM THE DIRECTION OF VELENJE

When you get to Slovenj Gradec from Velenje, drive ahead through the roundabout and straight ahead through the first traffic light. At the second traffic light (vis-a-vis restaurant MURKO) turn left. Drive ahead to the second crossroad where you will already see the Polymer Technology College on the left. Take a turn left. Drive straight ahead to the first crossroad and take two turns right to get to the parking space in front of VŠTP.

DIRECTIONS TO HOTEL VABO FROM THE SLOVENJ GRADEC BUS STATION

Go to the first intersection and turn right. Walk straight ahead and take a turn left at the first semaphORIZED intersection. Then walk straight ahead, past the post office on the right, and past the statue of the horse on the right, to the other end of the city centre. Hotel Vabo is about 50 meters further along from the statue, on the left side of the street.



DIRECTIONS FROM HOTEL VABO TO THE POLYMER TECHNOLOGY COLLEGE (walking)



©<http://www.vabo.si>



Coming from the Hotel from the turn right toward the city square and go straight ahead, past the statue of the horse and Tourist Information Office.

There you turn left into a narrow alley.

Walk straight ahead past the offices of the Municipality of Slovenj Gradec, located in the Rotenturn Manor.

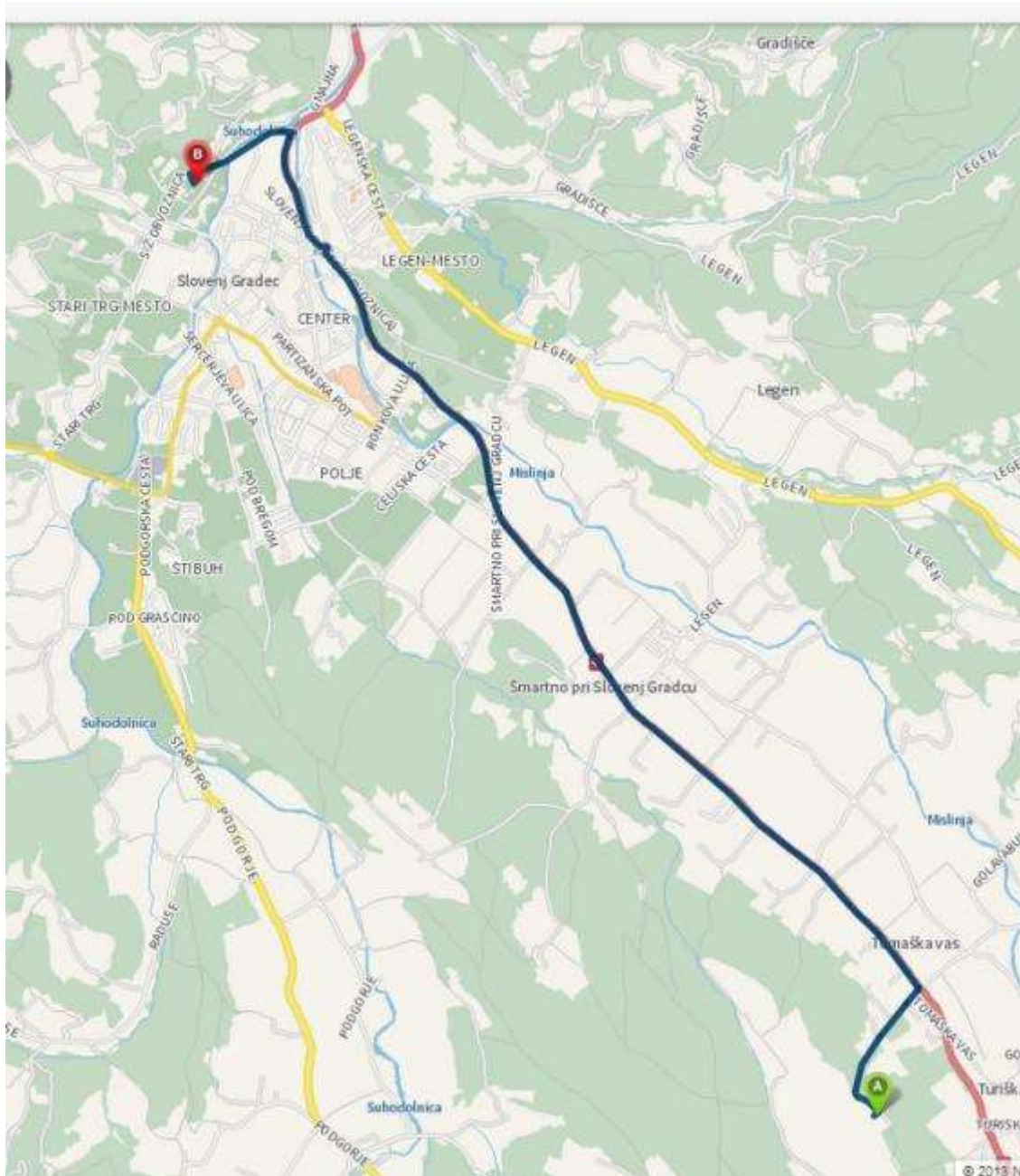
Straight ahead there is a bridge past river Suhadolnica. Crossing the bridge turn right to the walking path, which leads to VŠTP.

Your destination is the Polymer Technology College.



DIRECTIONS FROM GOSTIŠČE AERODROM TO VŠTP

When you get to Slovenj Gradec, drive ahead through the roundabout and straight ahead through the first traffic light. At the second traffic light (vis-a-vis restaurant MURKO) turn left. Drive ahead to the second crossroad where you will already see the Polymer Technology College on the left. Take a turn left. Drive straight ahead to the first crossroad and take two turns right to get to the parking space in front of VŠTP.



ABOUT THE ORGANIZER: THE POLYMER TECHNOLOGY COLLEGE

NAME AND ADDRESS

VISOKA ŠOLA ZA TEHNOLOGIJO POLIMEROV (VŠTP)
POLYMER TECHNOLOGY COLLEGE
Ozare 19, SI-2380 Slovenj Gradec, Slovenia

Telephone: +386 (0)2 620 47 60

E-mail: referat@vstp.si

Web: www.vstp.si

LEADERSHIP

Acting director and dean
dr. Silva Roncelli Vaupot



GENERAL DESCRIPTION

The Polymer Technology College (VŠTP) was founded in 2006, based on the needs of the polymer industry in Slovenia. It is the only institution in the country which educates engineers and master engineers of polymer technology. Its graduates have excellent chances for employment, because the area of polymer materials and technologies is one of the most rapidly growing industries in Europe and world, and the knowledge from this area is crucial for its further development.

Development goals of VŠTP are related to continuous rise of the study process quality and to development of research & development activities, with emphasis on applied research projects for companies. It has rich laboratory equipment, which is constantly being supplemented, upgraded and modernized. With this, it allows the students to do quality laboratory work and get acquainted with research work, whereas the researchers are enabled to perform the research activities.

By status VŠTP is an independent and private professional college with concession granted by the state, Professional college. Besides the programme of Polymer Technology, it has also accredited two other 1st cycle study programmes, namely Interactive Information Systems and Sustainable Engineering. With its unique approach and small group sizes the Polymer Technology College can pride itself with high successfulness of its students who regularly attend the lectures.

Moreover, it can also pride itself with numerous national and international projects, into which it successfully enters together with different European and other partners.

CONFERENCE BIOPOLYMER MATERIALS AND ENGINEERING

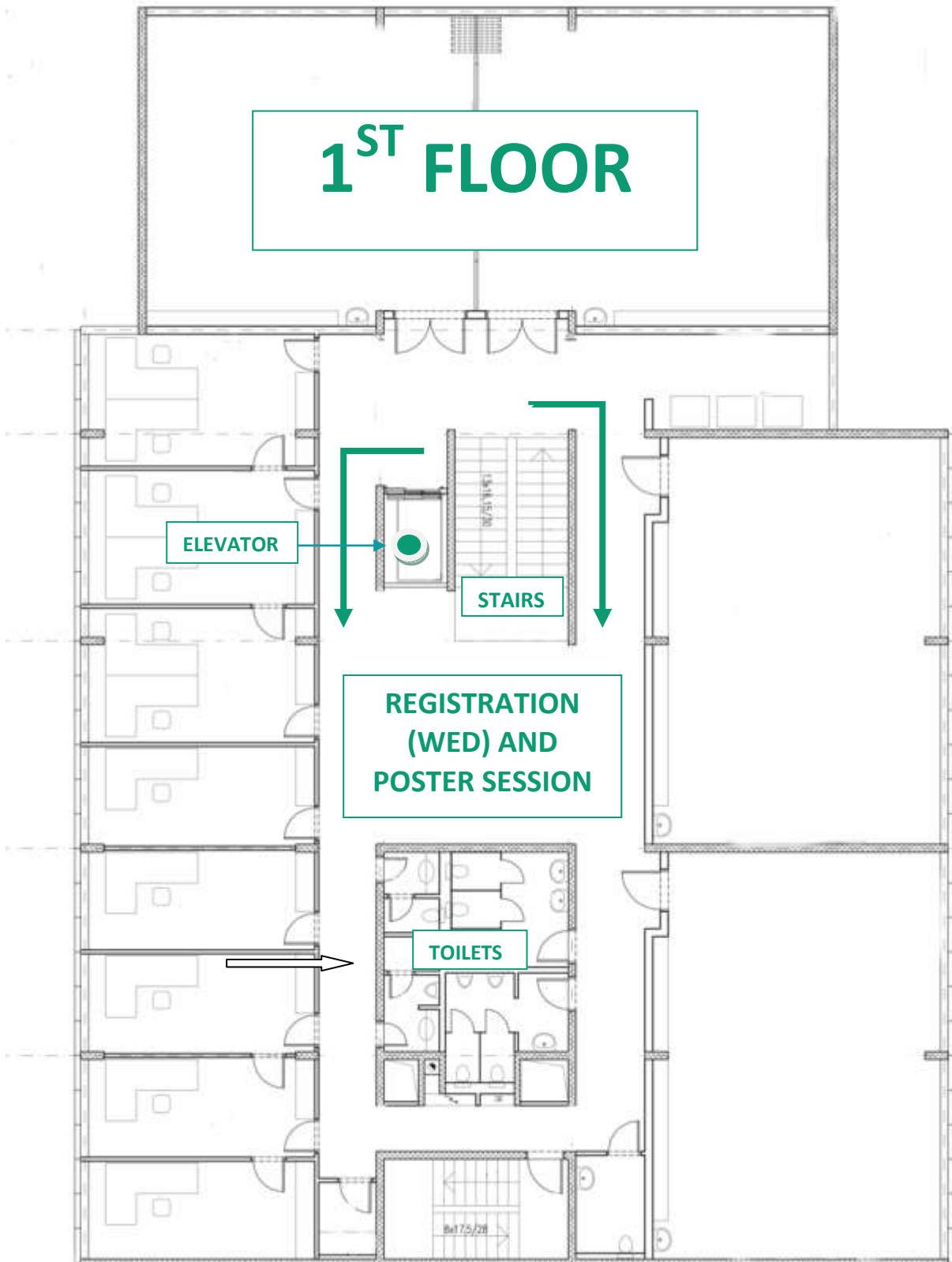
The conference opens on Wednesday, 15 April 2015, at 13:00 with registration and closes on Friday, 17 April 2015, at 15:00 with lunch. A detailed programme is already prepared and is available for participants on the BiMatE website. In case of minor changes in the programme, the version on the website will be updated. Final programme will also be handed out at registration.

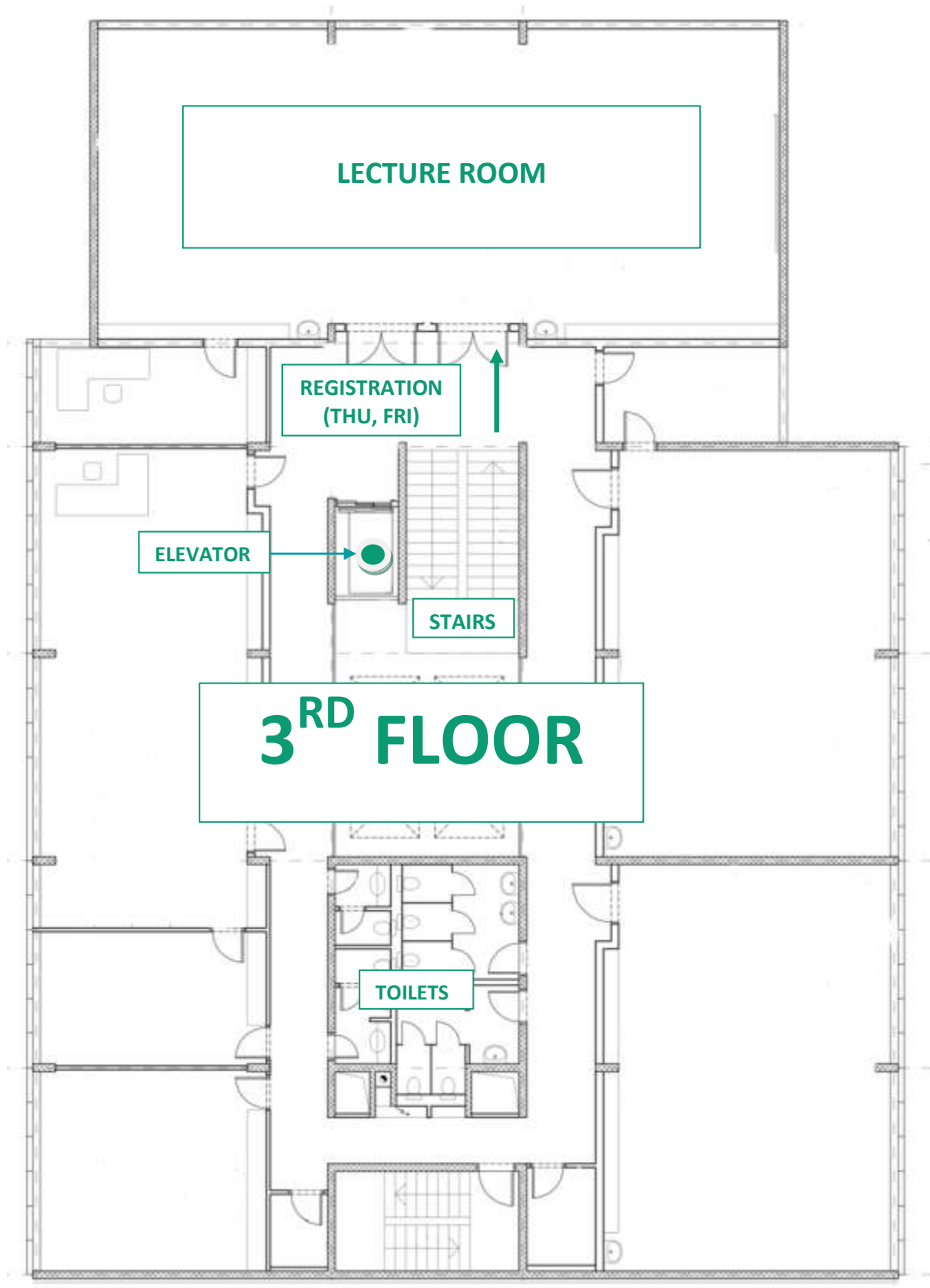
The conference will be held in the facilities of the Polymer Technology College, specifically as listed below:

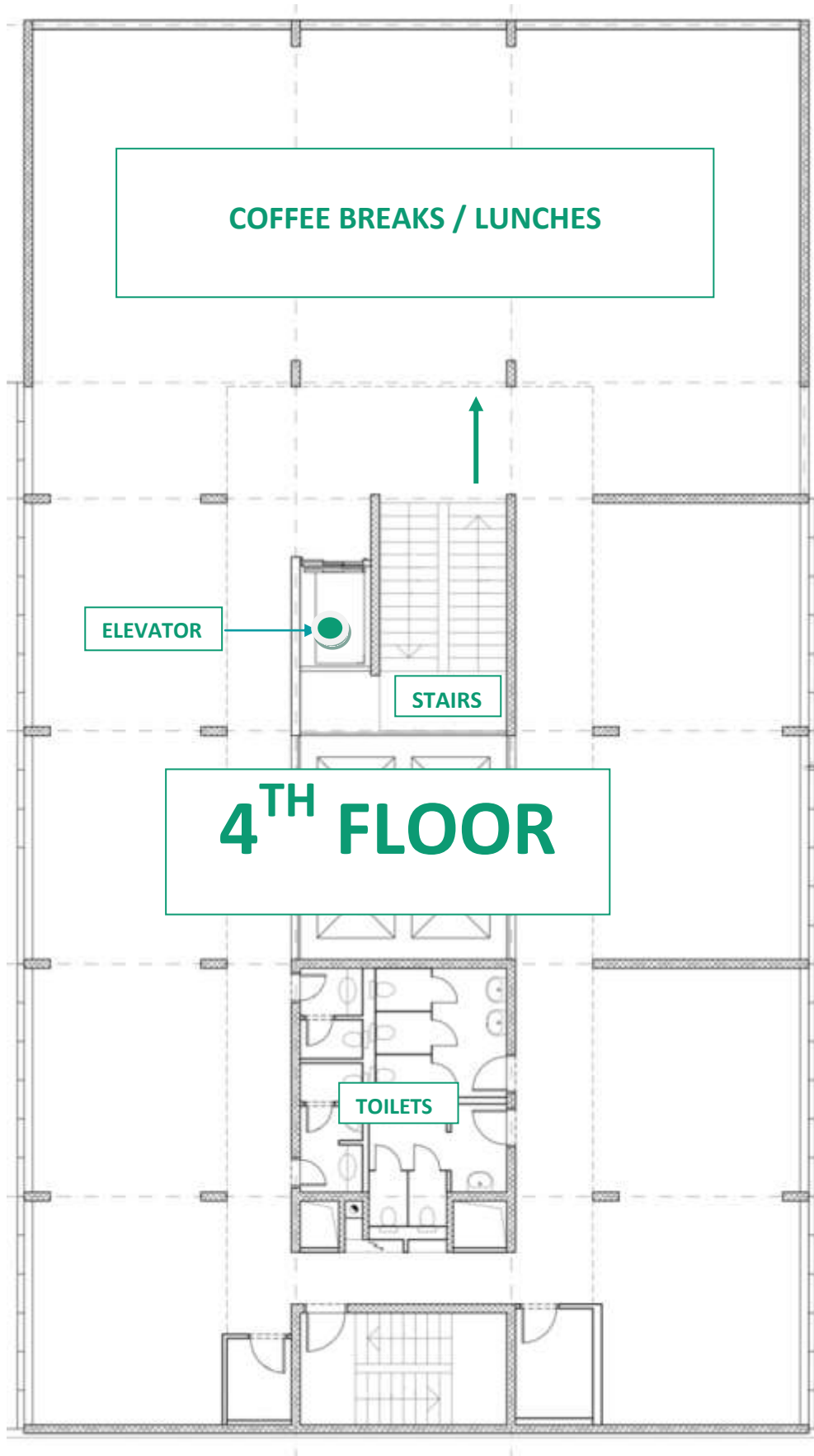
- REGISTRATION ON WEDNESDAY: 1ST FLOOR
- LECTURES: 3RD FLOOR
- REGISTRATION ON THURSDAY AND FRIDAY: 3RD FLOOR
- POSTER SESSION: 1RD FLOOR
- COFFEE AND LUNCH BREAKS: 4TH FLOOR
- WELCOME PARTY: GALERY KOROŠKA GALERIJA LIKOVNIH UMETNOSTI
- DINNER: HOTEL KOROŠICA

For better visualization please see pictures below. For any kind of questions or trouble help will be provided at the registration desk.

VŠTP





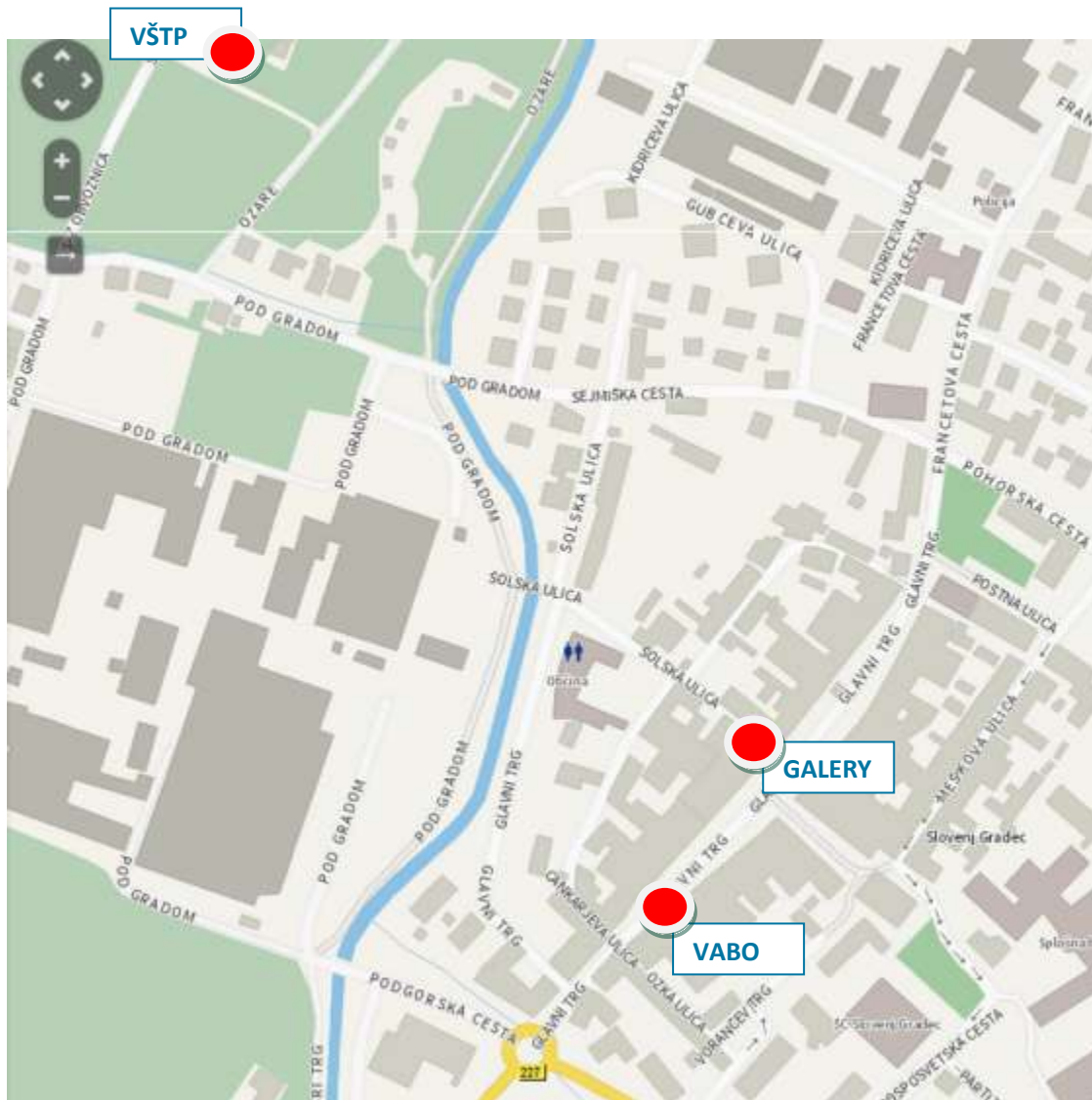


GALLERY KOROŠKA GALERIJA LIKOVNIH UMETNOSTI

The Gallery of Fine Arts Slovenj Gradec was founded in 1957 as a central regional gallery institution. It is focused on contemporary art, which does not exclude other periods in history.¹⁰



©<https://sites.google.com/site/pekarnasladokusec/opis-znamenitosti-v-kraju>



¹⁰ <http://www.glu-sg.si/en/about-us/history>

HOTEL KOROŠICA

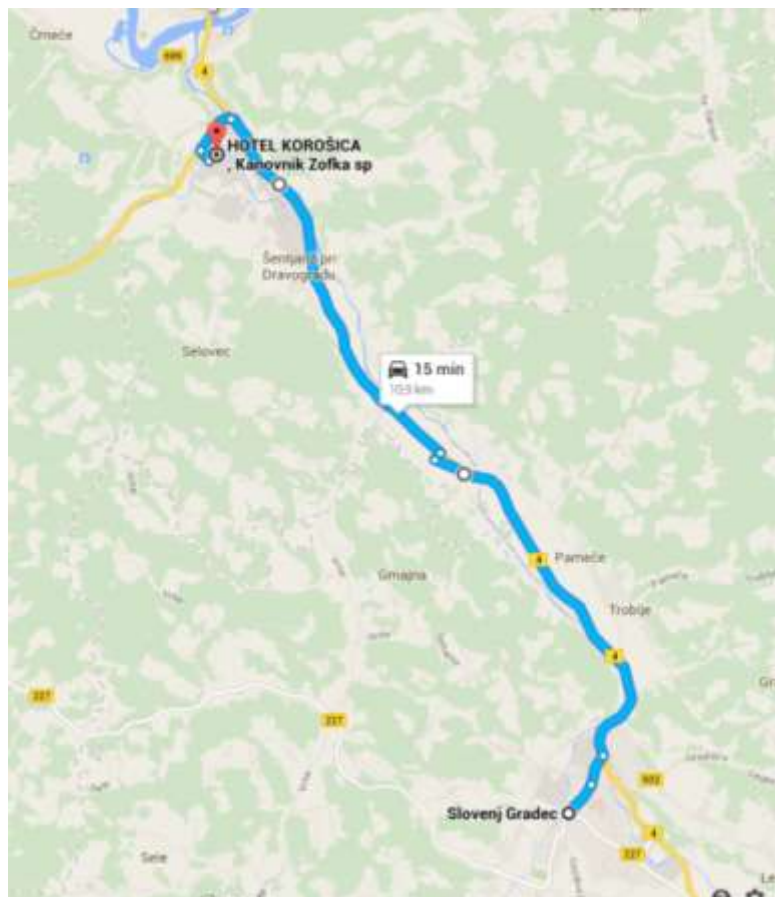
Hotel Korošica is located in Šentjanž pri Dravogradu, Otiški Vrh 250, about 10 km from Slovenj Gradec. For the conference dinner transportation is going to be organized.

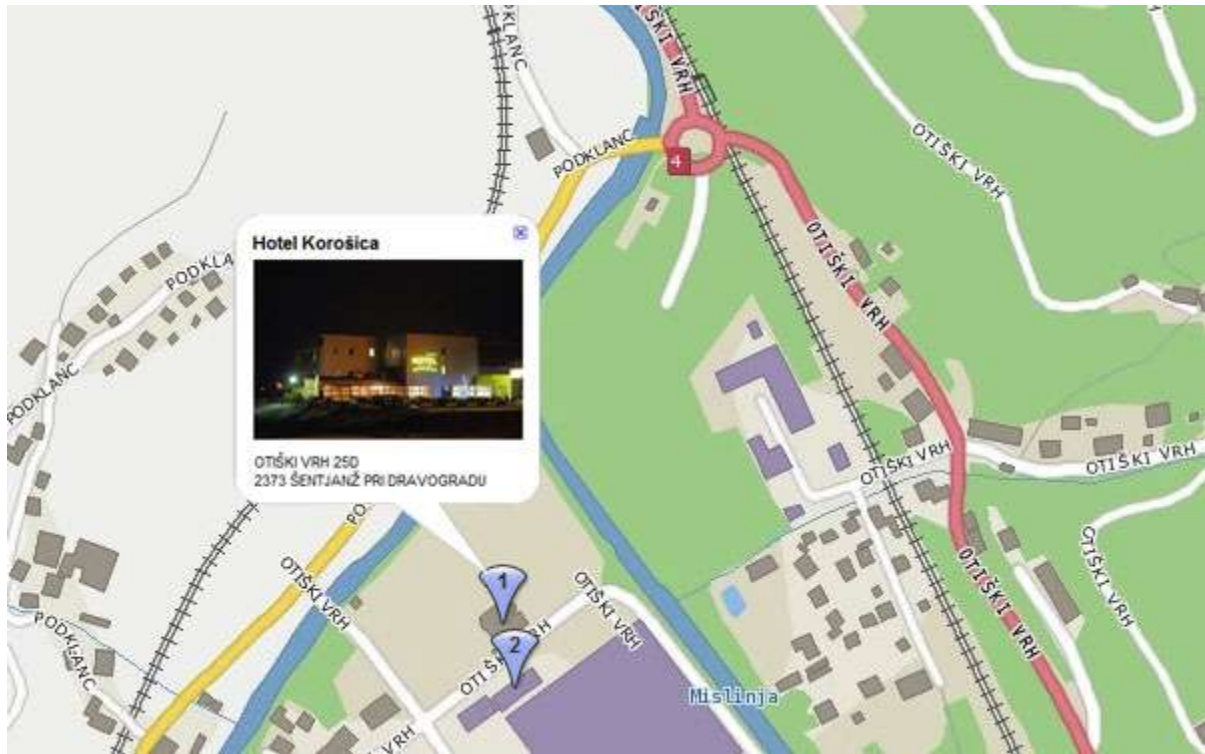


©<http://www.korosica.si/index.php?stran=predstavitev&sklop=main&lang=si>



©<http://golf-spa.si/detail/52/offer/165/dravograd-hotel-korosica-4.html>





CONTACTS

Conference Chair
Irena Pulko
Polymer Technology College
Slovenj Gradec, Slovenia
irena.pulko@vstp.si

Conference Secretariat
Jasmina Erker and Mateja Poročnik
Polymer Technology College
Ozare 19, SI-2380 Slovenj Gradec, Slovenia
Tel.: +386 (0)2 620 47 60
E-mail: bimate@vstp.si

MEDIA SPONSOR OF THE CONFERENCE

The media sponsor of the conference is:

